

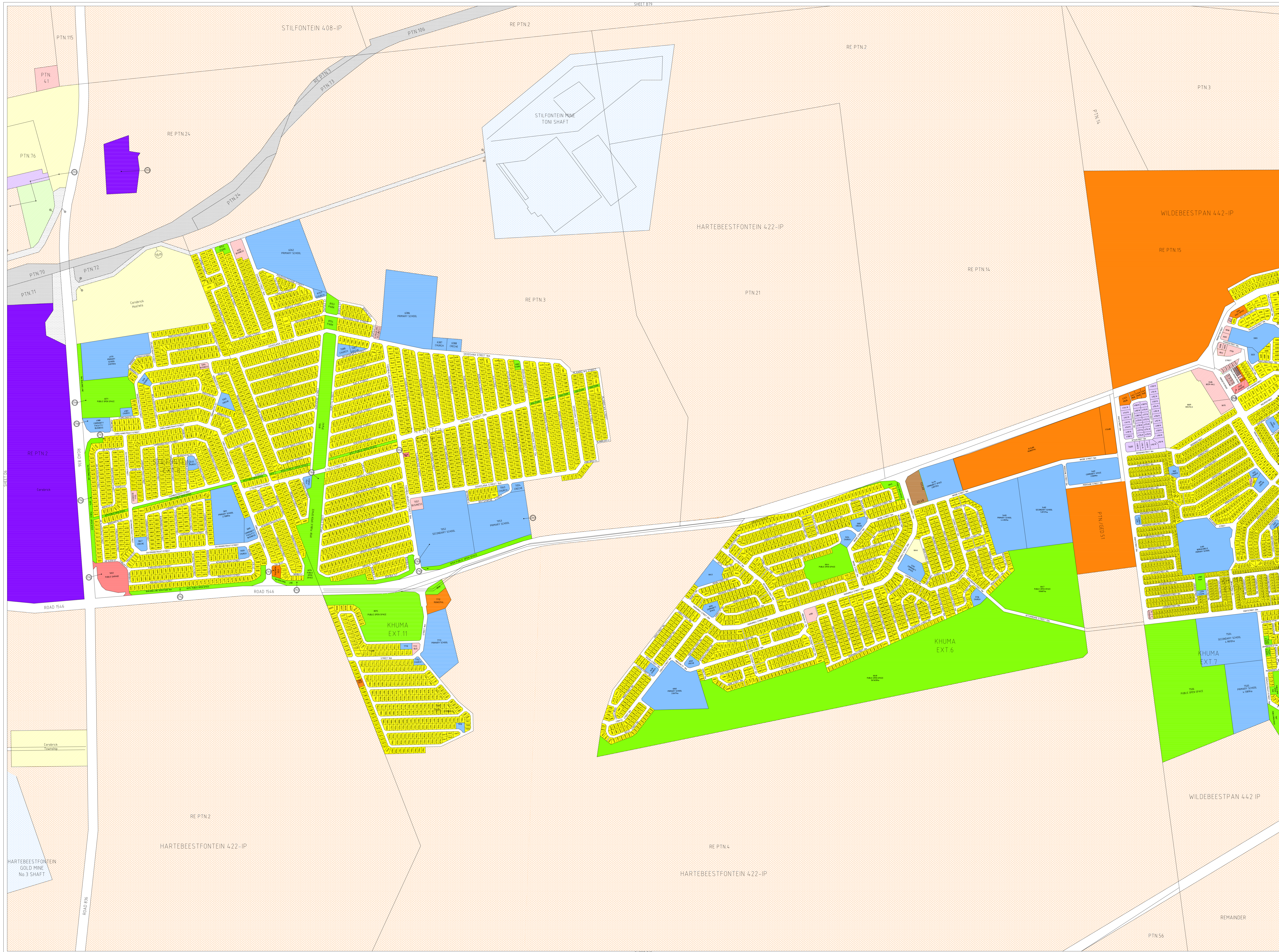
REFERENCE

- SCHEME BOUNDARY
- TOWNSHIP BOUNDARY
- ANNEXURE NUMBER
- PROPOSED ROADS AND WIDENINGS

USE ZONES

- RESIDENTIAL 1
- RESIDENTIAL 2
- BUSINESS 1
- BUSINESS 2
- SPECIAL
- INDUSTRIAL 1
- INDUSTRIAL 2
- INSTITUTIONAL
- AGRICULTURAL
- HIGH POTENTIAL/UNIQUE AGRICULTURAL
- MINING & QUARRYING
- MUNICIPAL
- GOVERNMENT
- CONSERVATION
- PUBLIC OPEN SPACE
- RECREATIONAL
- TRANSPORTATION
- EXISTING PUBLIC ROADS

SCALE 1 : 5 000



- USE ZONES -

APRIL 2011



APPROVED

MUNICIPAL MANAGER

DATE

